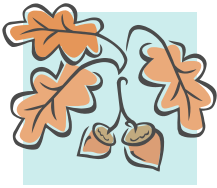


# AAUW ASHEVILLE NEWSLETTER



AAUW: Breaking down educational and economic barriers for women and girls



## SEPTEMBER 2013

| Sun   | Mon  | Tue   | Wed  | Thu  | Fri  | Sat  |
|---|--|---|--|--|--|--|
| 1   | 2<br><b>CAB</b><br><i>Felicia's Journey</i> ,<br>Trevor, 4:30 — 6<br>rsvp to Renée Levine, <a href="mailto:Haroldrenee@att.net">Harold renee@att.net</a><br><b>Labor Day</b> | 3<br><b>Happy Hikers</b><br>Every Tuesday at 9; 9/3 location: NC Arboretum; rsvp to Nini Abbott at <a href="mailto:niniabbott@gmail.com">niniabbott@gmail.com</a>   | 4<br><b>Adelante</b><br><i>Caramelo</i> , Cisneros<br>1:45 at home of Shirley Quisenberry; rsvp <a href="mailto:shirleyqberrry@yahoo.com">shirleyqberrry@yahoo.com</a> | 5  | 6  | 7  |
|   |  |   |  | <p>If you need a ride to any branch events, contact the program or group leader.</p>   |  |  |
| 8   | 9<br><b>Film Buds</b><br>Led by Beth Ellers<br><b>Film &amp; Location: TBA</b><br>5:30—7<br>   | 10<br>Contact Nini Abbott for location at <a href="mailto:niniabbott@gmail.com">niniabbott@gmail.com</a>  | 11<br><b>Reservation deadline</b> for Lunch Bunch; contact Sherry Brown at 357-8455 or <a href="mailto:sherrysaerie@gmail.com">sherrysaerie@gmail.com</a>              | 12<br><b>Film Fans</b><br>Led by Beth Johnson<br><b>Film : TBA</b><br>River Ridge Apt. Club House<br>12—1:30<br>   | 13<br><b>Lunch Bunch</b><br><b>Tupelo Honey South</b><br><b>Noon</b><br>1829 Hendersonville Road<br>rsvp to <a href="mailto:sherrysaerie@gmail.com">sherrysaerie@gmail.com</a> | 14   |
|   |  |   |  | <p><b>Reservation deadline</b> for 9/28 International Dining; rsvp to Andriette Kinsella at <a href="mailto:andriettek@bellsouth.net">andriettek@bellsouth.net</a></p> |  |  |
| 15  | 16   | 17  | 18   | 19   | 20 <b>RSVP re 9/22 Potluck</b>   | 21   |
| 22<br><b>POTLUCK</b><br><br>Home of B A Schenk<br>4 — 7<br>rsvp to Susan Grabel by Sept. 20, <a href="mailto:skgrabel@yahoo.com">skgrabel@yahoo.com</a> | 23   | 24<br><b>World Affairs</b><br><b>World Food Supply and Genetics;</b><br>1:30 pm at home of Jane White; rsvp to Jane @ 273-9354                                      | 25   | 26<br><b>Tea Time</b><br><i>Last Runaway</i> , Chevalier<br>4:00 at home of Jeanne Gochenour; rsvp to Jeanne @ 254-4961  | 27   | 28<br><b>Internatl. Dining</b><br><b>Taste of Thailand</b><br>6 pm at home of Andriette Kinsella<br> |
|   |  | <p><b>Contents</b></p> <p>Calendar &amp; Events pp.1-2<br/>President's Message p. 3<br/>Branch &amp; GEM News p. 3<br/>Member Info &amp; GEM Contributions p. 4</p> |  |  |  |  |
|   | 30   |   |  |  |  |  |

## Standing Study Groups and Activities

☞ Remember to notify the hostess or group leader if you plan to attend this month's meeting so that they can predict attendance and so that you can be apprised of any last-minute changes.

- ◆ **Adelante Book Group:** The book study group meets the first Wednesday of every month at homes of members; for this month's location and more information, contact group leaders Fran Myers at 274-0976 or fgmyers@bellsouth.net or Shirley Quisenberry, 828-285-2303 or shirleyqberrry@yahoo.com.
- ◆ **CAB Book Group:** The "Cocktails and Books" discussion group meets downtown the first Monday of each month, from 4:30 to 6 pm for wine and conversation. To get more information or add your name to the list of members, contact group leader Peg Steiner at galaxpeg@hotmail.com. If you plan to attend, rsvp to co-chair Renée Levine at haroldrenee@att.net. Attendance is limited to 15 participants per session.
- ◆ **Film Buds:** This film discussion group meets the second Monday of each month from 5:30 to 7 to discuss first-run films; attendance is limited to the first 20 current group members who make a **reservation** with the group leader, Beth Ellers; because of the large size of the group, new membership is closed, but note that the Film Fans group discusses the same film and is open to new members; to obtain this month's film selection, location, and other information, contact Beth Ellers at slark1@att.net. Participants bring pot-luck supper.
- ◆ **Film Fans:** This film discussion group meets the first Thursday after the second Monday of each month from noon to 1:30 at the River Ridge Apartments Club House; film is the same as that discussed by the Monday Film Buds group; members bring their own lunch; open to new members; for the film selection of this month's meeting or to get more information, contact group leader Beth Johnson at JOHNSON1ea@earthlink.net.
- ◆ **Happy Hikers:** This group meets weekly to take easy hikes at various locations in the area, as determined by the members. The group currently meets at 9 am on Tuesday mornings, but the day is subject to change, based on the schedules of the members. Contact Nini Abbott for more information at niniabbott@gmail.com or 828-658-4195.
- ◆ **International Dining Group:** The International Dining group enjoys great food and wonderful company. Participants learn more about the food and customs of

*Have an idea for a new study or activity group?*

If you have an idea for a new study or activity group, write a brief description and send it to me (adoner@frontier.com) by 9/20, so that I can put it in an article in the next newsletter. You can float your idea to see how other members respond. This is how all the current groups got started and, since we're probably the largest branch in the state, there's always room for more ideas and gatherings. I'll also forward your ideas to Study Group Chair Eleanor Johnson.



## FALL MEMBER POTLUCK DINNER



SUNDAY, SEPTEMBER 22

4 - 7

At the home of B A Schenk  
122 Jump Cove  
Weaverville

RSVP to Susan Grabel by September 20  
(also let her know if you need a ride)  
skgrabel@yahoo.com

different countries as they prepare and then savor meals from around the world. All AAUW members and their guests are welcome. For more information, contact Judy Roach at 828-505-7939 or judyroach2112@yahoo.com or Andriette Kinsella at 828-686-3604 or andriettek@bellsouth.net.

- ◆ **Lunch Bunch:** The Lunch Bunch is an informal gathering for lunch on the second Friday of each month at noon at a different area restaurant. The Lunch Bunch is open to all AAUW members who wish to be added to the **reservation list**. Be sure to contact Sherry Brown by the **deadline date** at sherrysaerie@gmail.com or 357-8455 and to get directions to the restaurant.
- ◆ **Tea Time (formerly "Evening") Book Group:** This book discussion group meets the fourth Thursday of each month at 4 pm at the homes of various members; all are welcome; for this month's location or to obtain more information, contact group leader Juanita Spanogle at 258-0096 or jspanogle@aol.com .
- ◆ **World Affairs Study Group:** The study group meets the fourth Tuesday of each month to discuss selected topics in world affairs; participants meet at the homes of different members. Anyone interested in the wider world and how it affects all of us is invited to attend meetings. For more information, contact Eve Miller at 299-8107 or evehigginsmiller7@gmail.com or LaDean Peterson, 828-650-3005 or LaDeanJune@charter.net.

## FROM THE BRANCH PRESIDENT



*Dear AAUW Friends:*

*Welcome back, everyone, after a wet summer! Your study group leaders and board members have been busy planning interesting and enjoyable activities and events for you for our new year. We are still finalizing dates, so details will be in the October newsletter.*

As you know, there is no regular daytime branch meeting in September because our annual Potluck dinner takes its place. It is the first official activity of the membership year. I want to thank B. A. Schenk and her husband Gary for graciously hosting this event in their gorgeous home in Weaverville on the 22nd of the month. It is always a lovely event and a chance for us to socialize and get to know new

members and catch up with old friends. Spouses are welcome.

I am looking forward to serving this year as your president. I feel honored to be a part of this smart and capable group of interesting

*Take care,  
Cathy Battle*

catherinebattle@earthlink.net or  
828-348-0505

## Branch News and Community Interest



A message from Emily Quinn regarding membership:

Our Asheville AAUW Branch as of August 25 had 152 members, which is a very good total this time of year after renewals. I still believe that ours will be the largest branch in the state. National is running about 4 weeks behind on entering membership data, so we have no official tally from them, nor any way to compare numbers. Since the 1st of August, we have welcomed five new members and two returning members.

Some statistics: Members Not Renewing: 13 (for various reasons); Members from whom there was no response (after 4 attempts): 8; Honorary Life Members: 8; Life Members: 6.

### Asheville Planned Parenthood Event!

Once again, only bigger and better, the Asheville branch of Planned Parenthood will hold its fabulously fun "Condom Couture" fundraiser and fashion show, with wine, food, and music.



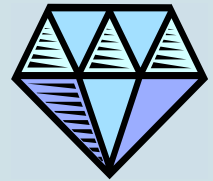
Come enjoy the company and the show **Thursday, September 19**, from 6:30 to 9, at the Pack Place Atrium (Diana Wortham Theatre lobby). Tickets are \$30 pre-sale and \$35 at the door. To purchase tickets, go to <http://www.plannedparenthood.org/health-systems/events-30124.htm>.

### Call for Help at the YW

AAUW Asheville members have been volunteering at the **YWCA drop in program** for the last few years. This program allows women to go to school and seek jobs, knowing that their children are **safe** and that this service is, most importantly, **free**.

The YWCA drop in daycare center has been so busy that they have had to turn people away two days this week. **They really, really need us**. Ten to noon is a prime time and it's pretty easy, as it's lunch time. Bring your own lunch and eat with the children. The Drop In Center also needs glue sticks and stacks of paper plates for art projects.

Even if it's only for one hour, one day a month, the staff will very much appreciate your help. If you can volunteer, please contact branch member Jeanne Smolkin at 828-254-4789 or [jsmolkin@gmail.com](mailto:jsmolkin@gmail.com).



### GEM NEWS

Last spring's **Eleventh Anniversary Fund Drive**, led by **Susan Grabel** and her team, brought in over \$21,000. As a result, we will be able once again to fund 12 college scholarships.

**This fall's GEM newsletter, "GEM Chips," will contain details, photos, and lists of contributors.**

Thanks to all our generous AAUW Asheville members who made this year's fund drive such a success.

If you are a new member, please know that "GEM" pertains to our branch's unique philanthropic arm, whose sole purpose is to raise funds to support undergraduate scholarships for local women whose educations have been interrupted or delayed.

To find out more or to make a contribution, find us on the branch website under "GEM Fund" at <http://asheville-nc.aauw.net>.

## AAUW Asheville

## Branch Board

|                    |                   |
|--------------------|-------------------|
| President          | Catherine Battle  |
| Vice-President     | Ann Clarke-Snell  |
| Secretary          | Deb Fulton-Helmer |
| Treasurer          | Laurie Powell     |
| V-P, Programs      | Susan Grabel      |
| Co-VP, Programs    | Judy Colella      |
| V-P, Membership    | Emily Quinn       |
| Co V-P, Membership | Mary Ellen Lewis  |
| Public Policy      | Ruth Slawson      |
| Study Groups       | Eleanor Johnson   |
| Newsletter         | Alice Doner       |
| Webmaster          | Eleanor Johnson   |
| GEM Representative | Pat Argue         |
| Past President     | Molly Keeney      |

Find us on the Web at

<http://asheville-nc.aauw.net>



### This Month's Member Birthdays —

*Tell your friends "Happy Birthday" and honor them with a gift to GEM!\**

|                  |      |
|------------------|------|
| Sherry Brown     | 9/21 |
| Barbara Campbell | 9/6  |
| Judith Colella   | 9/12 |
| Judith Hoy       | 9/4  |
| Beth Maczka      | 9/16 |
| Linda McCracken  | 9/21 |
| Laurie Powell    | 9/23 |
| Ilona Sena       | 9/23 |
| Ruth Slawson     | 9/21 |
| Joanne Swensen   | 9/28 |
| Carol Taylor     | 9/16 |
| Teresa Van Duyn  | 9/21 |

*\*See the GEM Page on the branch website to obtain a copy of the "giving sheet" and other information on how to contribute to the GEM Fund.*

## Welcome New and Returning Members!

Please welcome these new members who joined our branch during the summer; they will be great new assets to our organization. Contact information will be included in the soon-to-be-published directory.



- **Elizabeth Atkinson** — Elizabeth graduated from the University of Alabama, Birmingham, with a BA in Art and an MA in Education.
- **Ursula Finkel** — Ursula earned a BS in Social Sciences from Simmons College and an MS in Mental Health Counseling from Nova SE.
- **Shelley Freeman** — Shelley is a returning member and earned a BA in Speech/Language Pathology from both Montclair State University and Columbia University. She earned an MA in Special Education from Fairfield University.
- **Sheryl Husby** — Sheryl graduated from St. Andrews College with a BA in English and from the University of North Carolina, Charlotte, with an MA in English/Reading.
- **Cynthia Keever** — Cynthia earned a BA in English from the College of Wooster, a Master of Divinity from McCormick Theological Seminary, and an MLS in Library Science from the University of North Carolina, Chapel Hill.
- **Jansen McCreary** — Jansen graduated from Auburn University with a BS in Education.
- **Mara Pasternack** — Mara is also a returning member and received a BS in Education from New York University.

Look for the **new branch directory** that, hopefully, will be distributed in September. If they're ready, Helen McClintock will have copies at the September 22 Potluck.



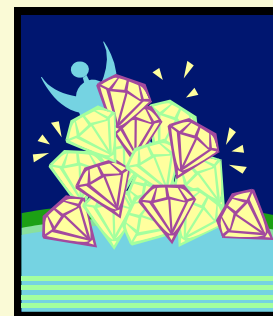
## GEM CONTRIBUTIONS AND TRIBUTES SINCE JULY 1

### Tributes

- ☞ In memory of Polly Cody, a former Life Member — Norma Snap
- ☞ In honor of Eve Miller, "on the big round one" — Melinda Brown
- ☞ In honor of the birthday of Carol Taylor — Alice Doner
- ☞ In honor of the 89th birthday of her aunt, Billie Menefee Gordon, "whose great wit and kindness continue to work magic for all those who know her" — Alice Doner
- ☞ In memory of the birthday of her mother, Maxine Menefee LaRue, "whose grace and kindness touched all those around her" — Alice Doner

### Contributions

- ☞ Contribution from the Prudential Foundation Matching Gifts



Note: Copies of the **GEM Fund giving sheet** can be found on the branch website at <http://asheville-nc.aauw.net/gem-fund/gem-tribute-gifts/>