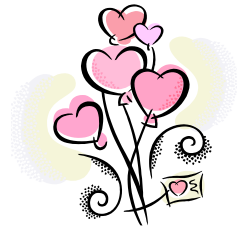


AAUW ASHEVILLE

NEWSLETTER



AAUW: breaking down educational and economic barriers for women and girls



FEBRUARY 2014

Sun	Mon	Tue	Wed	Thu	Fri	Sat										
					 Reservation Dead-line for Branch Meeting: rsvp to susangrabel2@gmail.com	1										
2	3 CAB  Benediction , Haruf 4:30 at home of Renée Levine; rsvp to Renée at renate250525@gmail.com .	4  Happy Hikers TBA Contact Nini Abbott for days & location at niniabbott@gmail.com	5 Adelante  Gathering of Old Men , Gaines 2 pm at home of Fusako Krummel; rsvp to 281-4533 or fusakok@bellsouth.net	6  Branch Meeting 11:30 1st Baptist Church “Handmade in America: WNC Crafts”	7	8										
9	10  Film Buds Led by Beth Ellers Film & Location: TBA; 5:30 — 7	11	12  Reservation Deadline for Lunch Bunch Rsvp by noon to Sherry Brown at 357-8455 or sherryrsaerie@gmail.com	13  Film Fans Led by Beth Johnson Film : TBA River Ridge Apt. Club House 12—1:30	14  Lunch Bunch Strada's 27 Broadway 12 Noon	15										
16	17 	18 Advocacy  LWV on Responses to NC Voting Law W. Avl Library at 6 pm See page 3 for more information.	19	20  Women Who Write 9:30 — 12 At home of Linda Nicodemus; rsvp to lnicodemus@bellsouth.net	21	22  International Dining Food of Brazil 6 pm At home of Suzanne Harter; rsvp to 254-2733										
23	24	25 World Affairs  Topic: Information Storage, Retrieval, & Privacy 1:30, at home of Eve Miller; rsvp to Eve at 299-8107 or evhigginsmiller7@gmail.com	26	27  Tea Time Sweetgrass , Monroe, 4:00 at home of Barbara Mayer; rsvp to Juanita Spanogle, 258-0096 or jspanogle@aol.com	28 <div>Contents<table><tr><td>Calendar</td><td>p. 1</td></tr><tr><td>Activities & Events</td><td>p. 2</td></tr><tr><td>President’s Message</td><td>p. 3</td></tr><tr><td>GEM News</td><td>p. 3</td></tr><tr><td>Member News</td><td>p. 4</td></tr></table></div>		Calendar	p. 1	Activities & Events	p. 2	President’s Message	p. 3	GEM News	p. 3	Member News	p. 4
Calendar	p. 1															
Activities & Events	p. 2															
President’s Message	p. 3															
GEM News	p. 3															
Member News	p. 4															

Standing Interest Groups and Activities

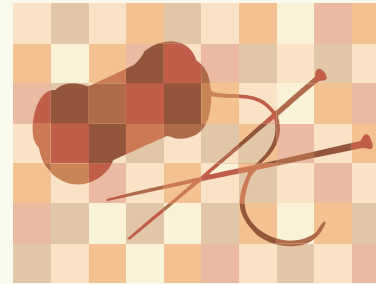
☞ Remember to notify the hostess or group leader if you plan to attend this month's meeting so that they can predict attendance and so that you can be apprised of any last-minute changes.

- ◆ **Adelante Book Group:** The book study group meets the first Wednesday of every month at homes of members; for this month's location and more information, contact group leaders Fran Myers at 274-0976 or figmyers@bellsouth.net or Shirley Quisenberry, 828-285-2303 or shirleyqberry@yahoo.com.
- ◆ **Advocacy Group:** The Advocacy Group is organized to support and advocate for issues that support the mission of AAUW and will increase awareness and effectiveness in bringing about social change to improve the lives of AAUW members and our community. The Advocacy Group will support only issues that are non-partisan and align with those of the national board of AAUW. For more information, contact Ruth Slawson at ruthslawson@hotmail.com or 545-3397.
- ◆ **CAB Book Group:** The "Cocktails and Books" discussion group meets downtown the first Monday of each month, from 4:30 to 6 pm for wine and conversation. To get more information or to add your name to the list of members, contact group leader Peg Steiner at galaxpeg@hotmail.com. If you plan to attend, rsvp to co-chair Renée Levine at renate250525@gmail.com. Attendance is limited to 15 participants per session.
- ◆ **Film Buds:** This film discussion group meets the second Monday of each month from 5:30 to 7 to discuss first-run films; attendance is limited to the first 20 current group members who make a **reservation** with the group leader, Beth Ellers; because of the large size of the group, new membership is closed, but note that the Film Fans group discusses the same film and is open to new members; to obtain this month's film selection, location, and other information, contact Beth Ellers at slark1@att.net. Participants bring pot-luck supper.
- ◆ **Film Fans:** This film discussion group meets the first Thursday after the second Monday of each month from noon to 1:30 at the River Ridge Apartments Club House; film is the same as that discussed by the Monday Film Buds group; members bring their own lunch; open to new members; for the film selection of this month's meeting or to get more information, contact group leader Beth Johnson at JOHNSON1ea@earthlink.net.
- ◆ **Happy Hikers:** This group meets weekly to take easy to moderate hikes at various locations in the area, as determined by the members. The group currently meets at 9:30 on Tuesday mornings, but the day is subject to change, based on the schedules of the members. Contact Nini Abbott for more information at niniabbott@gmail.com or 828-658-4195.
- ◆ **International Dining Group:** The International Dining group enjoys great food and wonderful company. Participants learn more about the food and customs of different countries as they prepare and then savor meals from around the world. All AAUW members and their guests are welcome. For more information, contact Judy Roach at 828-505-7939 or judyroach2112@yahoo.com or Andriette Kinsella at 828-686-3604 or andriettek@bellsouth.net.
- ◆ **Lunch Bunch:** The Lunch Bunch is an informal gathering for lunch on the second Friday of each month at noon at a

FEBRUARY BRANCH MEETING

Thursday, February 6

First Baptist Church



***"Handmade in America:
Advancing WNC as a
Cradle of Craft":***

Linda LaBelle, Appalachian Women
Entrepreneurs Coordinator

Lunch at 11:30, \$12

RSVP to SusanGrabel2@gmail.com

different area restaurant. The Lunch Bunch is open to all AAUW members who wish to be added to the **reservation list**. Be sure to contact Sherry Brown by the **deadline date** at sherrysaerie@gmail.com or 357-8455 and to get directions to the restaurant.

- ◆ **Tea Time (formerly "Evening") Book Group:** This book discussion group meets the fourth Thursday of each month at 4 pm at the homes of various members; all are welcome; for this month's book and location or to obtain more information, contact group leader Juanita Spanogle at 258-0096 or jspanogle@aol.com.
- ◆ **Women Who Write:** This group is for women who write short stories and/or memoir. They meet the third Thursday morning of each month at the homes of different members to share their creative prose and to give and receive constructive feedback in a non-threatening positive atmosphere. Group membership is currently closed, but, if you are interested in starting a second group or want more information, contact group leader Betty Paine at bettyjpaine@yahoo.com or 277-0542.
- ◆ **World Affairs Study Group:** The study group meets the fourth Tuesday of each month to discuss selected topics in world affairs; participants meet at the homes of different members. Anyone interested in the wider world and how it affects all of us is invited to attend meetings. For more information, contact Eve Miller at 299-8107 or evehigginsmiller7@gmail.com. or LaDean Peterson, 828-650-3005 or LaDeanJune@charter.net.



FROM THE BRANCH PRESIDENT

Dear AAUW Friends:

I can't believe we are already one month into 2014! I hope everyone is ready to gear back up after the holidays and our long break.

While you were resting, our GEM Fundraising Committee has been cooking up some new ideas for GEM and branch fundraising activities. You'll be hearing about them as the details get worked out. Be on the lookout for news about the GEM spring fund drive season.

The GEM "Birthday Dollars for Scholars" club, the brainchild of Jeanne Smolkin, has proven to be very successful as an on-going fundraiser for our scholarship program. Make sure you check the list each month to see whose birthdays are coming up so you can honor them with a donation.

Our Friendraiser in December was a big success and enticed several new members. Check the back page for information on our new members.

Mark your calendars for our next Branch meeting on Thursday, February 6, starting at 11:30 at our usual meeting place, the historic 1st Baptist Church, downtown. Our

speaker will be Linda LaBelle, coordinator for the Appalachian Women Entrepreneurs (AWE) program at Handmade in America. HandMade's AWE program teaches women in WNC communities the important business, creative, industry, and access-to-market skills necessary to develop and manage small businesses in today's economic climate.

Hope to see you at the meeting.

Take care,

Cathy Battle

catherinebattle@earthlink.net
828-348-0505



AAUW PUBLIC POLICY

Jan. 28, 2014, is the fifth anniversary of the signing of the Lilly Ledbetter fair pay act into law. Five years later, there is still unfinished business.

Sen. Barbara Mikulski (D-MD) and Rep. Rosa DeLauro (D-CT) have reintroduced the Paycheck Fairness Act this Congress. The bill has the support of the president. AAUW was critical to the passage of the Lilly Ledbetter Fair Pay Act in 2009 and is already **working hard** again to pass the Paycheck Fairness Act.

We need to be looking to Congress not only for the Paycheck Fairness Act but also for the **Fair Pay Act**, a bill led by Sen. Tom Harkin (D-IA) and Del. Eleanor Holmes Norton (D-DC). This bill addresses the gender pay gap between traditionally female-dominated occupations and male-dominated occupations, which continue to pay more despite requiring the same levels of skill and education. AAUW wants a society that values women's and men's work equally, and I know we can get there together.

This **fight for fair pay** started out to right a personal wrong, but the fight is now about women nationwide and their families. The pay gap affects whether families can buy food, pay the mortgage, and stay healthy. Do we really want, as **AAUW research** showed, to continue to allow our female graduates to be paid 7 percent less than male graduates despite working in the same fields and with the same college majors?

Here's what AAUW asks of you: Stand up for yourselves, stay informed, and **take action** with the folks at AAUW.

[Join Lilly in telling Congress it's time to do more!](#)

— from Ruth Slawson

[\[To get more information, check out the AAUW link included in Ruth's January 20 e-mail.\]](#)

The branch **Advocacy Group** encourages you to attend a

League of Women Voters Workshop

February 18, 6 pm

at the West Asheville Library

According to the spokesperson for the League of Women Voters (LWV) "the presentation will focus on ways around the new Voter Identification Verification Act (VIVA) that the League will be doing this year, including Letters to the Editor, the College Corps program, data analysis, presentations at high schools, senior living facilities, and other organization/groups serving communities this bill targets, general voter education about VIVA, rides to the polls, and poll monitoring during the primary and general election. Again this is all based on what we have the volunteers to do, and if we don't have volunteers we can't do it."

Branch Board

President	Catherine Battle
Vice-President	Ann Clarke-Snell
Secretary	Deb Fulton-Helmer
Treasurer	Laurie Powell
V-P, Programs	Susan Grabel
Co-VP, Programs	Judy Colella
V-P, Membership	Emily Quinn
Co-VP, Membership	Joyce Boehlen
Public Policy	Ruth Slawson
Interest Groups	Eleanor Johnson
Newsletter	Alice Doner
Webmaster	Eleanor Johnson
GEM Representative	Pat Argue
Past President	Molly Keeney

And thanks to Barbara Robinson, for her help with organizing the information for the newsletter!

Find us on the Web at

<http://asheville-nc.aauw.net>



This Month's Member Birthdays —

Tell your friends "Happy Birthday" and honor them with a gift to GEM!

Nini Abbott	2/16
Jayne Gallinger	2/23
Molly Keeney	2/24
Cynthia Keever	2/28
Betty Letzig	2/18
Millie Massey	2/9
Marion Mayfield-Johnson	2/25
Arlene Merritt	2/25
Fran Meyers	2/7
Karen O'Hara	2/8
Betty Paine	2/10
Maria Roloff	2/5
Susan Reynolds	2/28
Maria Roloff	2/5
Sarah Sands White	2/27

Welcome New Members!

Please welcome these new members who joined since the publication of the last newsletter; they will be great new assets to our organization.



◆ Lucy Borland —

Lucy attended our December Friendraiser as a guest of Betty Paine. Lucy earned a BA in philosophy from Western College/Miami University and came to us after attending our Friendraiser. You may contact her at

14 White Palmer Court
Biltmore Lake, NC 28715
[H] 828-667-2483; [C] 847-828-6039
Lucy.borland03@gmail.com

◆ Jane Hatley —

Jane was one of our speakers, from the Self-Help Credit Union), at our October branch meeting. She graduated from Randolph-Macon Woman's College with a BA in English; then went on to earn an MA in English at UNC-Chapel Hill and an MBA in Finance/Marketing from Vanderbilt University. You may reach her at

11 Olney Road; Asheville 28806
[H] 828-254-3560; [C] 828-413-5313
jane@self-help.org

◆ Lynn Lederer —

Lynn was referred to us by Mary Lasher. Lynn graduated from Wells College with a BA in Government/Sociology. Contact her at

17 Fairway View Drive; Weaverville 28787
[C] 828-279-3659
llfamily2002b@yahoo.com

◆ Ellen Nutter —

Ellen attended the December Friendraiser and was referred to us by Ann Snell and Ellen's sister Terry Peters, who joined last October. Ellen attended Mt. Holyoke College where she earned a BA in English and Political Science and then Columbia University, where she earned an MS in City Planning. You may reach her at

169 Flint Street; Asheville 28801
[H] 828-505-8242; [C] 828-279-7737
ELNUTTER@aol.com

NEW CO-VP FOR MEMBERSHIP

Emily Quinn, first V-P for Membership, writes, "I'd like to introduce Joyce Boehlen as the new Co-VP for Membership. She was slated to be President-Elect in Milwaukee before moving to Asheville. She also served as Auction Chairman for two years, as well as Directory Chairman. Welcome, Joyce, and thank you for your willingness to serve."

Directory Updates

- New address for Pat Hammond:
1301 Verde Vista; Asheville 28805
- New e-mail address for Renée Levine:
renate250525@gmail.com



GEM NEWS

Jeanne Smolkin, who organized and runs GEM's new "Birthdays Dollars for Scholars" program, reports the amazing success of the new program, with 16 members making contributions honoring members who had January birthdays, with contributions exceeding expectations.

Each month Jeanne sends out an e-mail with a link to an on-line survey that lists all the member birthdays for the coming month. You should have received the e-mail link for February and March birthdays last week. Members may then click on the members they wish to honor. Branch member Alice Doner created a special birthday card and, once Jeanne receives the contribution check, she will mail the card to the recipient, listing all the members who honored her with a gift to GEM, a gift that really does keep on giving, providing college scholarships for women to attend UNCA or AB Tech. This is an especially nice way to honor member friends and several recipients have commented how good it made them feel to be honored by fellow members.

Thanks for making this new program such a success and for your continuing generosity.

GEM Contributions in the Last Month

- ☞ Kathryn C. Preyer Trust — for "the worthwhile endeavors of the GEM Fund"
- ☞ Elaine Potter — in memory of her mother, Grace Walker, "to whom the GEM Fund was very special"
- ☞ Mary Louise Powell — in memory of Grace Walker
- ☞ Pat Argue — in memory of Connie Flippo
- ☞ Marlene and Allen Schaklan — in honor of Lavra Enteen, for "her life's work in improving children's' lives"
- ☞ Juanita Spanogle — in memory of Betsy Ewing
- ☞ Pat and Edward Argue
- ☞ Jacque Morgan

- ♥ **Birthdays Dollars for Scholars Contributors** — Jeanne Smolkin, Betsy Kirk, Emily Quinn, Nini Abbott, Helen McClintock, Susan Grabel, Pat Argue, Marilyn Kolton, Jacque Morgan, Melinda Brown, Deb Fulton-Helmer, LaDean Peterson, Lynn Lederer, Cathy Battle, and Alice Doner