

AAUW ASHEVILLE NEWSLETTER

AAUW: Breaking down educational and economic barriers for women and girls



OCTOBER 2013

Sun	Mon	Tue	Wed	Thu	Fri	Sat
		1	2 Adelante <i>Education of a British Protected Child</i> , Achebe, 1:45 at home of Jayne Gallinger; rsvp Jgallinger@charter.net	3 Branch Meeting 11:30 1st Baptist Church	4	5
6	7 CAB <i>Flight Behavior</i> , Kingsolver; 4:30— 6 at home of Renée Levine; rsvp to Haroldrenee@att.net	8	9 Reservation deadline for Lunch Bunch; contact Sherry Brown at 357-8455 or sherrysaerie@gmail.com	10	11 Lunch Bunch 12:00 Blackbird Café 47 Biltmore Ave	12
13	14 Film Buds Film & Location: TBA 5:30—7 	15	16 Happy Hikers Meets each Wednesday at 9:30 Contact Nini Abbott for location at niniabbot@gmail.com	17 Film Fans Film : TBA River Ridge Apt. Club House 12—1:30	18	19
20	21	22 World Affairs STEM Education 1:30 pm at home of LaDean Peterson; ladeanjune@charter.net	23 	24 Tea Time <i>The Winter People</i> , Ehle; 4 pm at home of Jo Yates; rsvp to joyates104@gmail.com	25 Reservation deadline for 11/9 International Dining: Hungary ; rsvp to judyroach2112@yahoo.com	26
27	28	29	30 	31 	1 Reservation deadline for November Branch Meeting; rsvp to Susan Grabel at skgrabel@yahoo.com	2

Contents

Calendar & Activities	pp.1-2
Branch Meeting Info	p. 2
President's Message	p. 3
New Study Groups	p. 3
GEM News	p. 3
New Members	p. 4
Member Birthdays	p. 4
GEM Tributes	p. 4

Standing Study Groups and Activities

☞ Remember to notify the hostess or group leader if you plan to attend this month's meeting so that they can predict attendance and so that you can be apprised of any last-minute changes.

- ◆ **Adelante Book Group:** The book study group meets the first Wednesday of every month at homes of members; for this month's location and more information, contact group leaders Fran Myers at 274-0976 or fjmyers@bellsouth.net or Shirley Quisenberry, 828-285-2303 or shirleyqberry@yahoo.com.
- ◆ **CAB Book Group:** The "Cocktails and Books" discussion group meets downtown the first Monday of each month, from 4:30 to 6 pm for wine and conversation. To get more information or to add your name to the list of members, contact group leader Peg Steiner at galaxpeg@hotmail.com. If you plan to attend, rsvp to co-chair Renée Levine at haroldrenee@att.net. Attendance is limited to 15 participants per session.
- ◆ **Film Buds:** This film discussion group meets the second Monday of each month from 5:30 to 7 to discuss first-run films; attendance is limited to the first 20 current group members who make a **reservation** with the group leader, Beth Ellers; because of the large size of the group, new membership is closed, but note that the Film Fans group discusses the same film and is open to new members; to obtain this month's film selection, location, and other information, contact Beth Ellers at slark1@att.net. Participants bring pot-luck supper.
- ◆ **Film Fans:** This film discussion group meets the first Thursday after the second Monday of each month from noon to 1:30 at the River Ridge Apartments Club House; film is the same as that discussed by the Monday Film Buds group; members bring their own lunch; open to new members; for the film selection of this month's meeting or to get more information, contact group leader Beth Johnson at JOHNSON1ea@earthlink.net.
- ◆ **Happy Hikers:** This group meets weekly to take easy to moderate hikes at various locations in the area, as determined by the members. The group currently meets at 9:30 am on Wednesday mornings, but the day is subject to change, based on the schedules of the members. Contact Nini Abbott for more information at niniabbott@gmail.com or 828-658-4195.
- ◆ **International Dining Group:** The International Dining group enjoys great food and wonderful company. Participants learn more about the food and customs of different countries as they prepare and then savor meals from around the world. All AAUW members and their guests are welcome. For more information, contact Judy Roach at 828-505-7939 or judyroach2112@yahoo.com or Andriette Kinsella at 828-686-3604 or andriettek@bellsouth.net.
- ◆ **Lunch Bunch:** The Lunch Bunch is an informal gathering for lunch on the second Friday of each month at noon at a

Monthly Branch Meeting and Luncheon

THURSDAY, October 3

First Baptist Church

5 Oak Street

Lunch at 11:30*

Program at 12:30 –

Topic: Women's Non-Profit Organizations



Guest Speakers:

Jane Hatley: Self-Help Credit Union

**Celest Collins, On Track Financial
Education and Counseling**

Jennie Eblen, Women for Women

*If you plan to be there for lunch (\$12), please
RSVP to Susan Gabel at
skgrabel@yahoo.com

different area restaurant. The Lunch Bunch is open to all AAUW members who wish to be added to the **reservation list**. Be sure to contact Sherry Brown by the **deadline date** at sherrysaerie@gmail.com or 357-8455 and to get directions to the restaurant.

- ◆ **Tea Time (formerly "Evening") Book Group:** This book discussion group meets the fourth Thursday of each month at 4 pm at the homes of various members; all are welcome; for this month's book and location or to obtain more information, contact group leader Juanita Spanogle at 258-0096 or jspanogle@aol.com.
- ◆ **World Affairs Study Group:** The study group meets the fourth Tuesday of each month to discuss selected topics in world affairs; participants meet at the homes of different members. Anyone interested in the wider world and how it affects all of us is invited to attend meetings. For more information, contact Eve Miller at 299-8107 or evehigginismiller7@gmail.com or LaDean Peterson, 828-650-3005 or LaDeanJune@charter.net.



FROM THE BRANCH PRESIDENT

Dear AAUW Friends:

It was wonderful seeing old and new friends at our Potluck, our first official activity of our new year, with good food and friendship. We owe a special thanks to B.A. and Gary Schenk for graciously hosting the event again this year.

If you were there you got to hear a preview of our upcoming speakers from Susan Grabel. The Study Group leaders were introduced and a few new activity group ideas were outlined. These activities and groups are the glue that helps to bind all of our smart, strong women together into our Asheville Branch, the largest in the state.

I look forward to seeing you at our first Branch meeting on October 3 at our regular meeting

place, The First Baptist Church. **You will notice that our meeting times have changed to first Thursdays, due to a conflict with scheduling our increasing numbers at the church.** I look forward to seeing you all there. Remember, if you need a ride, contact Susan Grabel at skgrabel@yahoo.com or 828-505-3826.

Take care,

Cathy Battle

catherinebattle@earthlink.net or
828-348-0505

Members Plan New Study Groups

As branch president Cathy Battle says, "These activities and groups are the glue that helps to bind all of our smart, strong women together into our Asheville Branch." Our branch continues to grow and is now the largest in the state. Consequently, it is time to consider adding some new study and activity groups. If you have an idea for a new group, contact Study Group Chair Eleanor Johnson at Johnson@buncombe.main.nc.us and also send a description to me, Alice Doner at adoner@frontier.com, so that I can put your description in the next branch newsletter. Below are some possibilities suggested by members; take a look to see if you might be interested:



♦ Writers Group —

Betty Paine writes, "This group is for people who write fiction or memoir. They will meet monthly to share their creative prose and to give and receive constructive feed-back in a non-threatening, positive atmosphere. An organizational meeting will be held Thursday, October 10, 10 am." Contact Betty Paine, 277-0542, or bettyjpaine@yahoo.com, for more information.

♦ Local Literary, Arts, and Performing Arts Study Group —

Peg Steiner writes that, at the moment, she has a kernel of an idea about this group and notes that it is not a book discussion group. Rather, the group would meet only 5 or 6

times a year and have several group leaders. Meetings would focus on local writers, poets, and historians — possibly also local musicians and artists — who would read or perform excerpts from their work. In the case of written works, participants would read examples of the author's work and be prepared to ask questions and discuss ideas invoked by the works. If you have interest in such a group or more ideas about how the group could be organized, please contact Peg Steiner at galaxpeg@hotmail.com or 828-252-7328.

♦ Other ideas?

Do you have an idea for another study or activity group? If so, let us know. See beginning of this article for contact information.



GEM News

A-B Tech and UNCA have announced the names of our twelve **GEM Fund scholarship recipients** for 2013-14. Attending A-B Tech:

- ♦ Markia Brooks
- ♦ Charmane Cox
- ♦ Jayne English
- ♦ Rachelle Sorensen-Cox
- ♦ Alison Tippins
- ♦ Erica Halliman
- ♦ Regina Hill
- ♦ Kristin Kahl
- ♦ Julie Wade
- ♦ Scholar, yet to be named

Attending UNCA:

- ♦ Amanda Cloyd
- ♦ Laura Haire

Watch for more information on these GEM Scholars in the Fall "GEM Chips," GEM's biannual newsletter currently posted on the branch website, and in future monthly AAUW Asheville newsletters.

If you are a new member, please know that "GEM" stands for "Gaining Educational Momentum" and pertains to our branch's unique philanthropic arm, whose sole purpose is to raise funds to support undergraduate scholarships for women whose educations have been interrupted or delayed.

To find out more or to make a contribution, find us on the branch website under "GEM" at <http://asheville-nc.aauw.net>. adoner@frontier.com.

Branch Board

President	Catherine Battle
Vice-President	Ann Clarke-Snell
Secretary	Deb Fulton-Helmer
Treasurer	Laurie Powell
V-P, Programs	Susan Grabel
Co-VP, Programs	Judy Colella
V-P, Membership	Emily Quinn
Co V-P, Membership	Mary Ellen Lewis
Public Policy	Ruth Slawson
Study Groups	Eleanor Johnson
Newsletter	Alice Doner
Webmaster	Eleanor Johnson
GEM Representative	Pat Argue
Past President	Molly Keeney

Find us on the Web at
<http://asheville-nc.aauw.net>



This Month's Member Birthdays —

*Tell your friends "Happy Birthday" and honor them with a gift to GEM!**

Cathy Battle	10/11
Cynthia Earle	10/6
Beth Ellers	10/25
Barbara Griswold	10/27
Wendy Haner	10/30
Mary Ellen Lewis	10/4
Jennifer Kantonen	10/25
Marion Mathews	10/9
Edith Moubrey	10/
Anne Sayers	10/10
Norma Snap	10/21
Ann Snell	10/7
Juanita Spanogle	10/17
Yvette Wessel	10/25
Alice Wutschell	10/23

You can find a copy of the GEM "giving sheet" on the branch website, under "GEM." The giving sheet contains space for designating tributes and honorees. This is a great way to honor friends and loved ones with a gift that truly does "keep on giving."

Welcome New Members!

Please welcome these new members who joined since the publication of the last newsletter; they will be great new assets to our organization. We are 156 members strong — and growing!



◆ Carol Cohen —

Carol earned a BS in Education from the University of Pennsylvania. Find her contact information in the new directory.

◆ Kitty McKeithen —

Kitty graduated from Queens University in Charlotte with a BA in Psychology. Kitty is included in the new directory.

◆ Anne Sayers —

Anne earned a BA in Sociology at Greensboro College and an MSW in Social Work at UNC-Chapel Hill. Find her contact information in the new directory.

◆ Carol Smith —

Carol graduated from City College of New York with a BA in Speech Language

Pathology and Audiology and an MA in Speech Language Pathology. Carol joined us after the directory went to press; her contact information follows:

42 Sparkle Dun Drive
 Biltmore Lake, NC 28715
 [H] 828-667-0053; [C] 201-213-6037
carolsmith49@gmail.com

Look for the **new branch directory** that will be distributed in September and October at the Potluck and by study group leaders. If you haven't received yours by the end of October, contact Emily Quinn at daveandem.quinn@gmail.com



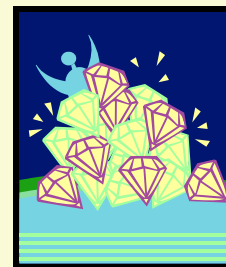
RECENT GEM CONTRIBUTIONS AND TRIBUTES

Tributes

- ☞ In honor of the birthday of Judith Hoy — Helen McClintock
- ☞ In honor of Ruth Slawson's special birthday — Helen McClintock
- ☞ In memory of the birthday of her grandmother, Sadie Alice Sharpe, "whose wit and unbounded generosity lit up the lives of all those around her" — Alice Doner
- ☞ In honor of the birthday of Mary Howell Mueller, her college roommate and life-long friend — Alice Doner

Contributions

- ☞ Ilona Sena



Note: Copies of the **GEM Fund giving sheet** can be found on the branch website at <http://asheville-nc.aauw.net/gem-fund/gem-tribute-gifts/>